



ENELTEC[®]
brighten your ideas

CONTENTS

P1	Brief Introduction
P2	History
P3	Organization
P4-P5	TUV Listed LED Street Light
P6-P7	TUV Listed LED Gas Station Light
P8-P10	LED Spotlight
P11	LED Bulb
P12-P13	LED Downlight



P14-P16	LED Tube
P17-P18	LED Panel Light
P19-P21	LED High Bay Light
P22	LED Corn Light
P23	TUV Listed COB LED Street Light
P24	LED Flood Light
P25-P26	LED Tunnel Light
P27-P29	LED Explosion Proof Light

BRIEF INTRODUCTION

Eneltec, founded in 1982, is a professional LED lighting manufacturer in China, with more than 30 years' experience in the development and manufacture of lighting products. Working on providing high quality service to the customers, Eneltec is growing more powerful in the lighting industry with the aid of its powerful technology and excellent marketing.

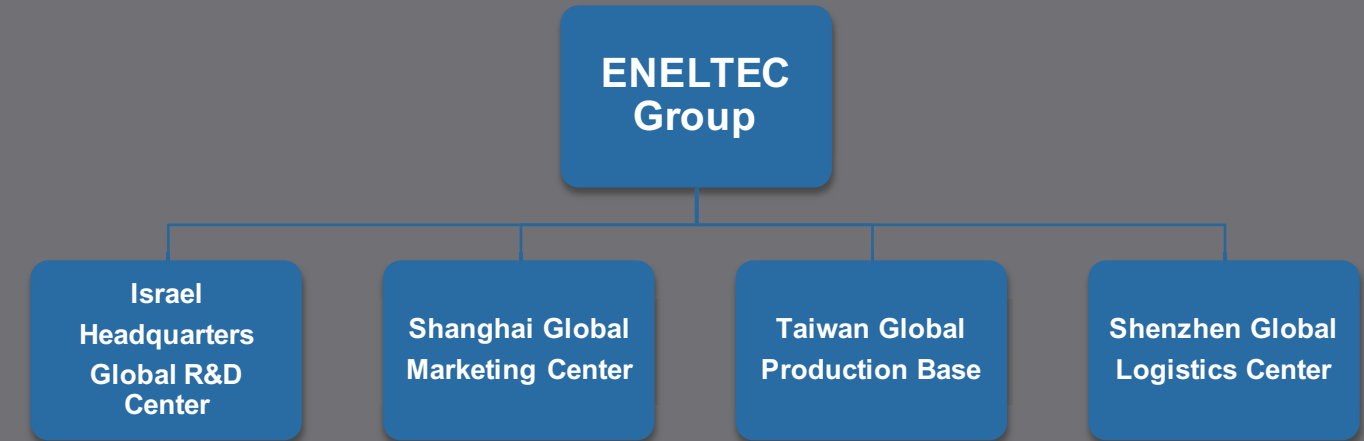
CORE TECHNOLOGY

- Ultra low loss optic design
- LED heat sink system design
- High efficient drive circuit design

HISTORY

2014, Eneltec successfully developed LED Stage Lights.
2013, Eneltec successfully developed LED Grow Lights.
2011, Eneltec successfully developed LED Explosion Proof Lights.
2010, Eneltec successfully developed LED Panel Lights.
2009, Eneltec (Shanghai) was founded as Global Marketing Center of Eneltec Group.
2008, Eneltec (Israel) was founded as new Global R&D Center.
2007, Eneltec successfully developed LED High Bay Lights.
2006, Eneltec successfully developed LED Flood Lights.
2005, Eneltec successfully developed LED Street Lights.
2004, Eneltec successfully developed LED Downlights.
2003, Eneltec successfully developed LED Light Tubes.
2002, Eneltec successfully developed LED Bulbs.
2001, Eneltec successfully developed LED Spotlights.
1998, Eneltec successfully developed T5 Adapters and greatly promoted energy-saving projects.
1995, Eneltec invested USD 2,000,000 to set up the lighting product testing system, Eneltec Global R&D Center was founded meanwhile.
1993, Eneltec Group was set up and Eneltec (Taiwan) Factory was founded in the same year.
1982, Eneltec was founded, devoting to the R&D of lighting products.

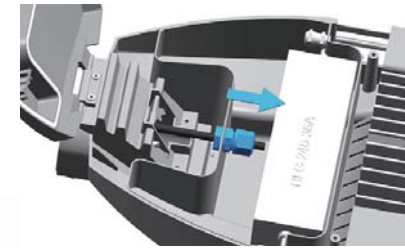
ORGANIZATION



TUV Listed LED Street Light



PHILIPS
LUMILEDS



Thread the cable by M16 waterproof connector, do not tighten the connector.

Open the electrical box by removing two M5 hexagon screws.



Model No.	Power (W)	Input Voltage	Lumen (LM)	Color	Beam Angle	PF	IP Rating	Product Dimension (mm)
ENSL-30W-01TUV	35	100-240VAC/12VDC/24VDC	3325	3800-4100K/ 5000-5650K/ 5650-6300K	135°H x 50°V/ 140°H x 65°V/ 140°H x 70°V/ 110°H x 110°V	0.9	IP66	431×316×136
ENSL-60W-01TUV	65	100-240VAC/24VDC	6175			0.9	IP66	504×316×136
ENSL-90W-01TUV	100	100-240VAC/24VDC	9500			0.9	IP66	577×316×136
ENSL-120W-01TUV	135	100-240VAC	12825	3800-4100K/ 5000-5650K/ 5650-6300K	135°H x 50°V/ 140°H x 65°V/ 140°H x 70°V/ 110°H x 110°V	0.9	IP66	650×316×136
ENSL-150W-01TUV	165	100-240VAC	15675			0.9	IP66	723×316×136
ENSL-180W-01TUV	200	100-240VAC	19000			0.9	IP66	796×316×136
ENSL-210W-01TUV	230	100-240VAC	21850			0.9	IP66	869×316×136

Flexible Installations



H0



H10



H15



V0



V10



V15

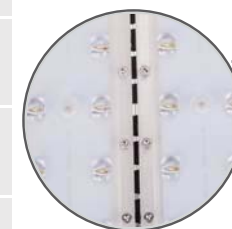
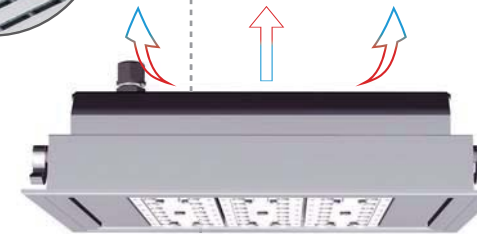
TUV Listed LED Gas Station Light



Exclusive Appearance Design



Enclosed but ventilation back design can not only keep the heat dissipation but also avoid laceration.



Gaps between the modules will increase the thermal dissipation rate and solve the problem of dust deposition.



Professional lens design with 60°, 90° and 110° optional.



Convenient connection, neat, clean and efficiency.



Use waterproof connector to fix the input cables, easy to make maintenance.



The exquisite and innovated frame holder not only makes the installation more simple but also firmer.

Model No.	Input Voltage	Power (W)	Lumen (LM)	Beam Angle	CRI	Color	IP Rating	Product Dimension (mm)
ENEP-40W-04TUV	100-240VAC	40	3800	60°/90°/110°	75	4000K/5000K/5700K	IP65	231×316×120
ENEP-80W-04TUV	100-240VAC	80	7600	60°/90°/110°	75	4000K/5000K/5700K	IP65	304×316×120
ENEP-120W-04TUV	100-240VAC	120	11400	60°/90°/110°	75	4000K/5000K/5700K	IP65	377×316×120
ENEP-160W-04TUV	100-240VAC	160	15200	60°/90°/110°	75	4000K/5000K/5700K	IP65	450×316×120

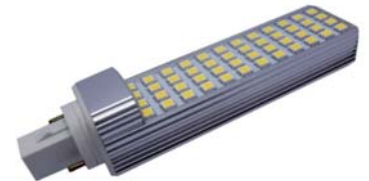
LED Spotlight



Model No.	Power (W)	Lumen (LM)	Beam Angle	Base	Input Voltage	PF	Color	Product Dimension (mm)
ENSP-3WCOBMR16-01	3	240	60°	MR16	12VDC	0.6	2800-3200K/4000-4500K/6000-6500K	Φ50×61
ENSP-3WCOBGU10-01	3	240	60°	GU10	85-265VAC	0.6	2800-3200K/4000-4500K/6000-6500K	Φ50×61
ENSP-3WCOBE27-01	3	240	60°	E27	85-265VAC	0.6	2800-3200K/4000-4500K/6000-6500K	Φ50×61
ENSP-3WCOBE14-01	3	240	60°	E14	85-265VAC	0.6	2800-3200K/4000-4500K/6000-6500K	Φ50×61
ENSP-5WCOBMR16-01	5	450	60°	MR16	12VDC	0.6	2800-3200K/4000-4500K/6000-6500K	Φ50×71
ENSP-5WCOBGU10-01	5	450	60°	GU10	85-265VAC	0.6	2800-3200K/4000-4500K/6000-6500K	Φ50×71
ENSP-5WCOBE27-01	5	450	60°	E27	85-265VAC	0.6	2800-3200K/4000-4500K/6000-6500K	Φ50×71
ENSP-5WCOBE14-01	5	450	60°	E14	85-265VAC	0.6	2800-3200K/4000-4500K/6000-6500K	Φ50×71
ENSP-7WCOBMR16-01	7	600	60°	MR16	12VDC	0.6	2800-3200K/4000-4500K/6000-6500K	Φ50×86
ENSP-7WCOBGU10-01	7	600	60°	GU10	85-265VAC	0.6	2800-3200K/4000-4500K/6000-6500K	Φ50×86
ENSP-7WCOBE27-01	7	600	60°	E27	85-265VAC	0.6	2800-3200K/4000-4500K/6000-6500K	Φ50×86
ENSP-7WCOBE14-01	7	600	60°	E14	85-265VAC	0.6	2800-3200K/4000-4500K/6000-6500K	Φ50×86

LED G24 Light

Model No.	Power (W)	Lumen (LM)	Beam Angle	Base	Input Voltage	PF	Color	Product Dimension (mm)
ENSP-6WG24-02	6	530	120°	G24	85-265VAC	0.6	2800-3200K/4000-4500K/6000-6500K	35×35×120
ENSP-6WG24-02D	6	530 Dimmable	120°	G24	85-265VAC	0.6	2800-3200K/4000-4500K/6000-6500K	35×35×120
ENSP-6WE27-02	6	530	120°	E27	85-265VAC	0.6	2800-3200K/4000-4500K/6000-6500K	35×35×127
ENSP-6WE27-02D	6	530 Dimmable	120°	E27	85-265VAC	0.6	2800-3200K/4000-4500K/6000-6500K	35×35×127
ENSP-7WG24-02A	7	680	120°	G24	85-265VAC	0.95	2800-3200K/4000-4500K/6000-6500K	35×35×120
ENSP-7WG24-02AD	7	680 Dimmable	120°	G24	85-265VAC	0.95	2800-3200K/4000-4500K/6000-6500K	35×35×120
ENSP-7WE27-02A	7	680	120°	E27	85-265VAC	0.95	2800-3200K/4000-4500K/6000-6500K	35×35×127
ENSP-7WE27-02AD	7	680 Dimmable	120°	E27	85-265VAC	0.95	2800-3200K/4000-4500K/6000-6500K	35×35×127
ENSP-10WG24-02	10	900	120°	G24	85-265VAC	0.95	2800-3200K/4000-4500K/6000-6500K	35×35×160
ENSP-10WG24-02D	10	900 Dimmable	120°	G24	85-265VAC	0.95	2800-3200K/4000-4500K/6000-6500K	35×35×160
ENSP-10WE27-02	10	900	120°	E27	85-265VAC	0.95	2800-3200K/4000-4500K/6000-6500K	35×35×166
ENSP-10WE27-02D	10	900 Dimmable	120°	E27	85-265VAC	0.95	2800-3200K/4000-4500K/6000-6500K	35×35×166
ENSP-12WG24-02A	12	1080	120°	G24	85-265VAC	0.95	2800-3200K/4000-4500K/6000-6500K	35×35×160
ENSP-12WG24-02AD	12	1080 Dimmable	120°	G24	85-265VAC	0.95	2800-3200K/4000-4500K/6000-6500K	35×35×160
ENSP-12WE27-02A	12	1080	120°	E27	85-265VAC	0.95	2800-3200K/4000-4500K/6000-6500K	35×35×166
ENSP-12WE27-02AD	12	1080 Dimmable	120°	E27	85-265VAC	0.95	2800-3200K/4000-4500K/6000-6500K	35×35×166



EPISTAR



LED R7S Light



EPISTAR



Model No.	Power (W)	Lumen (LM)	Beam Angle	Base	Input Voltage	PF	Color	Product Dimension (mm)
ENSP-5WR7S-02	5	430	200°	R7S	85-265VAC	0.6	2800-3200K/4000-4500K/6000-6500K	78×54×35
ENSP-5WR7S-02D	5	430 Dimmable	200°	R7S	85-265VAC	0.6		78×54×35
ENSP-8WR7S-02	8	640	200°	R7S	85-265VAC	0.95	2800-3200K/4000-4500K/6000-6500K	118×54×35
ENSP-8WR7S-02D	8	640 Dimmable	200°	R7S	85-265VAC	0.95		118×54×35
ENSP-10WR7S-02	10	830	200°	R7S	85-265VAC	0.95	2800-3200K/4000-4500K/6000-6500K	118×54×35
ENSP-10WR7S-02D	10	830 Dimmable	200°	R7S	85-265VAC	0.95		118×54×35
ENSP-12WR7S-02	12	1010	200°	R7S	85-265VAC	0.95	2800-3200K/4000-4500K/6000-6500K	138×54×35
ENSP-12WR7S-02D	12	1010 Dimmable	200°	R7S	85-265VAC	0.95		138×54×35
ENSP-13WR7S-02	13	1040	200°	R7S	85-265VAC	0.95	2800-3200K/4000-4500K/6000-6500K	189×54×35
ENSP-13WR7S-02D	13	1040 Dimmable	200°	R7S	85-265VAC	0.95		189×54×35
ENSP-15WR7S-02	15	1320	200°	R7S	85-265VAC	0.95	2800-3200K/4000-4500K/6000-6500K	189×54×35
ENSP-15WR7S-02D	15	1320 Dimmable	200°	R7S	85-265VAC	0.95		189×54×35

LED Bulb



Model No.	Power (W)	Lumen (LM)	Beam Angle	Base	Input Voltage	PF	Color	Product Dimension (mm)
ENBL-3WSMD-01	3	300	120°	E14/E27/B22	100-240VAC	0.6	2800-3200K/4000-4500K/6000-6500K	Φ50×100
ENBL-5WSMD-01	5	450	120°	E14/E27/B22	100-240VAC	0.6	2800-3200K/4000-4500K/6000-6500K	Φ60×110
ENBL-7WSMD-01	7	630	120°	E27/B22	100-240VAC	0.6	2800-3200K/4000-4500K/6000-6500K	Φ60×114
ENBL-9WSMD-01	9	810	120°	E27	100-240VAC	0.6	2800-3200K/4000-4500K/6000-6500K	Φ60×134
ENBL-12WSMD-01	12	1000	120°	E27	100-240VAC	0.6	2800-3200K/4000-4500K/6000-6500K	Φ70×168
ENBL-15WSMD-01	15	1400	120°	E27	100-240VAC	0.6	2800-3200K/4000-4500K/6000-6500K	Φ96.5×161
ENBL-18WSMD-01	18	1650	120°	E27	100-240VAC	0.6	2800-3200K/4000-4500K/6000-6500K	Φ96.5×181

Economical LED Downlight



EPISTAR



Model No.	Power (W)	Lumen (LM)	Beam Angle	Input Voltage	PF	Color	Product Dimension (mm)	Hole Dimension (mm)
ENDL-6WSMD-01	6	540	90°	200-240VAC	0.5	3000K/ 4000K/ 6000K	Φ110×57.5	Φ90
ENDL-8WSMD-01	8	720	90°	200-240VAC	0.5	3000K/ 4000K/ 6000K	Φ125×62.3	Φ105
ENDL-12WSMD-01	12	1080	90°	200-240VAC	0.5	3000K/ 4000K/ 6000K	Φ145×67	Φ125
ENDL-15WSMD-01	15	1350	90°	200-240VAC	0.9	3000K/ 4000K/ 6000K	Φ165×72.7	Φ145
ENDL-18WSMD-01	18	1620	90°	200-240VAC	0.9	3000K/ 4000K/ 6000K	Φ190×82.8	Φ165
ENDL-22WSMD-01	22	1980	90°	200-240VAC	0.9	3000K/ 4000K/ 6000K	Φ230×93.8	Φ200

Ultra Slim LED Downlight

Model No.	Power (W)	Lumen (LM)	Beam Angle	Input Voltage	PF	Color	Product Dimension (mm)	Hole Dimension (mm)
ENDL-8WSMD-R02	8	720	90°	100-240VAC	0.8	3000K/ 4000K/ 6000K	Φ110×24	Φ95
ENDL-8WSMD-R02D	8	720 Dimmable	90°	220-240VAC	0.8		Φ110×24	Φ95
ENDL-11WSMD-R02	11	990	90°	100-240VAC	0.5	3000K/ 4000K/ 6000K	Φ140×25	Φ125
ENDL-11WSMD-R02D	11	990 Dimmable	90°	220-240VAC	0.5		Φ140×25	Φ125
ENDL-15WSMD-R02	15	1350	90°	100-240VAC	0.9	3000K/ 4000K/ 6000K	Φ160×26	Φ140
ENDL-15WSMD-R02D	15	1350 Dimmable	90°	220-240VAC	0.9		Φ160×26	Φ140
ENDL-18WSMD-R02	18	1710	90°	100-240VAC	0.9	3000K/ 4000K/ 6000K	Φ180×27	Φ160
ENDL-18WSMD-R02D	18	1710 Dimmable	90°	220-240VAC	0.9		Φ180×27	Φ160
ENDL-23WSMD-R02	23	2185	90°	100-240VAC	0.9	3000K/ 4000K/ 6000K	Φ230×28	Φ200
ENDL-23WSMD-R02D	23	2185 Dimmable	90°	220-240VAC	0.9		Φ230×28	Φ200



EPISTAR



T8 LED Tube

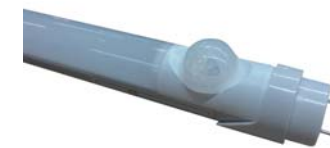


CHIMEI



Model No.	Input Voltage	Lumen (LM)	Power (W)	PF	LED Driver	Beam Angle	Color	Product Dimension (mm)
ENLT-T8060-NI-01	100-240VAC	830	9	0.95	Non-Isolated Driver	120°	2800-3300K/ 4000-4500K/ 5500-6000K	590 Φ26
ENLT-T8120-NI-01	100-240VAC	1750	18	0.95	Non-Isolated Driver	120°		1198 Φ26
ENLT-T8150-NI-01	100-240VAC	2200	22	0.95	Non-Isolated Driver	120°		1498 Φ26
ENLT-T8060-I-01	85-265VAC	830	9	0.95	Isolated Driver	120°	2800-3300K/ 4000-4500K/ 5500-6000K	590 Φ26
ENLT-T8120-I-01	85-265VAC	1750	18	0.95	Isolated Driver	120°		1198 Φ26
ENLT-T8150-I-01	85-265VAC	2200	22	0.95	Isolated Driver	120°		1498 Φ26

Motion Sensor LED Tube



CHIMEI



Model No.	Input Voltage	Lumen (LM)	Power (W)	PF	Beam Angle	Color	Cover	Product Dimension (mm)
ENLT-T8060-NI-01S	100-240VAC	800	9	0.95	120°	2800-3300K/ 4000-4500K/ 5500-6000K	Clear/ Frosted	590 Φ26
ENLT-T8120-NI-01S	100-240VAC	1750	18	0.95	120°	2800-3300K/ 4000-4500K/ 5500-6000K	Clear/ Frosted	1198 Φ26
ENLT-T8150-NI-01S	100-240VAC	2200	22	0.95	120°	2800-3300K/ 4000-4500K/ 5500-6000K	Clear/ Frosted	1498 Φ26



CHIMEI



T5 LED Tube

Model No.	Input Voltage	Lumen (LM)	Power (W)	PF	LED Driver	Beam Angle	Color	Product Dimension (mm)
ENLT-T5060-NI-01	100-240VAC	800	9	0.95	Non-Isolated Driver	120°	2800-3300K/ 4000-4500K/ 5500-6000K	604 Φ15
ENLT-T5120-NI-01	100-240VAC	1700	18	0.95	Non-Isolated Driver	120°	2800-3300K/ 4000-4500K/ 5500-6000K	1204 Φ15
ENLT-T5150-NI-01	100-240VAC	2050	22	0.95	Non-Isolated Driver	120°	2800-3300K/ 4000-4500K/ 5500-6000K	1504 Φ15
ENLT-T5060-I-01	85-265VAC	800	9	0.95	Isolated Driver	120°	2800-3300K/ 4000-4500K/ 5500-6000K	604 Φ15
ENLT-T5120-I-01	85-265VAC	1700	18	0.95	Isolated Driver	120°	2800-3300K/ 4000-4500K/ 5500-6000K	1204 Φ15
ENLT-T5150-I-01	85-265VAC	2050	22	0.95	Isolated Driver	120°	2800-3300K/ 4000-4500K/ 5500-6000K	1504 Φ15

Ultra Slim LED Panel

Model No.	Input Voltage	Power (W)	Lumen (Lm)	PF	Beam Angle	Color	IP Rating	Product Dimension (mm)
ENPL-2020-12W-01	100-240VAC	12	744	0.9	120°	3000K/ 4000K/ 5000K/ 6000K	IP44	195×195×9
ENPL-3030-18W-01	100-240VAC	18	1242	0.9	120°		IP44	295×295×9
ENPL-3060-24W-01	100-240VAC	24	1704	0.9	120°	3000K/ 4000K/ 5000K/ 6000K	IP44	295×595×9
ENPL-6060-36W-01	100-240VAC	36	2880	0.9	120°		IP44	595×595×9
ENPL-6262-36W-01	100-240VAC	36	2880	0.9	120°	3000K/ 4000K/ 5000K/ 6000K	IP44	620×620×9
ENPL-20120-36W-01	100-240VAC	36	2664	0.9	120°		IP44	195×1195×9
ENPL-30120-36W-01	100-240VAC	36	2736	0.9	120°	3000K/ 4000K/ 5000K/ 6000K	IP44	295×1195×9
ENPL-60120-48W-01	100-240VAC	48	3552	0.9	120°		IP44	595×1195×9





Spring Mounted LED Panel

Model No.	Input Voltage	Power (W)	Lumen (Lm)	PF	Beam Angle	Color	IP Rating	Product Dimension (mm)
ENPL-2020-12W-02	100-240VAC	12	780	0.9	120°	3000K/ 4000K/ 5000K/ 6000K	IP44	202×202×19
ENPL-3030-18W-02	100-240VAC	18	1314	0.9	120°		IP44	302×302×19
ENPL-3060-24W-02	100-240VAC	24	1800	0.9	120°	3000K/ 4000K/ 5000K/ 6000K	IP44	302×602×19
ENPL-6060-36W-02	100-240VAC	36	3024	0.9	120°		IP44	602×602×19
ENPL-6262-36W-02	100-240VAC	36	3024	0.9	120°	3000K/ 4000K/ 5000K/ 6000K	IP44	622×622×19
ENPL-20120-36W-02	100-240VAC	36	2808	0.9	120°		IP44	202×1202×19
ENPL-30120-36W-02	100-240VAC	36	2880	0.9	120°	3000K/ 4000K/ 5000K/ 6000K	IP44	302×1202×19
ENPL-60120-48W-02	100-240VAC	48	3744	0.9	120°		IP44	602×1202×19

COB LED High Bay Light

Model No.	Power (W)	Lumen (LM)	Beam Angle	Input Voltage	PF	Color	IP Rating	Product Dimension (mm)
ENHB-30W-02MW	30	3450	45°/ 90°/ 120°	100-240VAC	0.95	2800-3300K/ 4000-4500K/ 5500-6000K	IP65	Lamp Body 45°: Φ420×255 90°: Φ500×190 120°: Φ515×140 Lamp Base 273×193×358
ENHB-50W-02MW	50	5750	45°/ 90°/ 120°	100-240VAC	0.95	2800-3300K/ 4000-4500K/ 5500-6000K	IP65	Lamp Body 45°: Φ420×255 90°: Φ500×190 120°: Φ515×140 Lamp Base 273×193×358
ENHB-80W-02MW	80	9200	45°/ 90°/ 120°	100-240VAC	0.95	2800-3300K/ 4000-4500K/ 5500-6000K	IP65	Lamp Body 45°: Φ420×255 90°: Φ500×190 120°: Φ515×140 Lamp Base 273×193×358
ENHB-100W-02MW	100	11500	45°/ 90°/ 120°	100-240VAC	0.95	2800-3300K/ 4000-4500K/ 5500-6000K	IP65	Lamp Body 45°: Φ420×255 90°: Φ500×190 120°: Φ515×140 Lamp Base 273×193×358
ENHB-120W-02MW	120	13800	45°/ 90°/ 120°	100-240VAC	0.95	2800-3300K/ 4000-4500K/ 5500-6000K	IP65	Lamp Body 45°: Φ420×255 90°: Φ500×190 120°: Φ515×140 Lamp Base 273×193×358
ENHB-150W-02MW	150	17250	45°/ 90°/ 120°	100-240VAC	0.95	2800-3300K/ 4000-4500K/ 5500-6000K	IP65	Lamp Body 45°: Φ420×255 90°: Φ500×190 120°: Φ515×140 Lamp Base 273×193×358
ENHB-180W-02MW	180	20700	45°/ 90°/ 120°	100-240VAC	0.95	2800-3300K/ 4000-4500K/ 5500-6000K	IP65	Lamp Body 45°: Φ420×255 90°: Φ500×190 120°: Φ515×140 Lamp Base 273×193×358
ENHB-200W-02MW	200	23000	45°/ 90°/ 120°	100-240VAC	0.95	2800-3300K/ 4000-4500K/ 5500-6000K	IP65	Lamp Body 45°: Φ420×255 90°: Φ500×190 120°: Φ515×140 Lamp Base 273×193×358
ENHB-250W-02MW	250	28750	45°/ 90°/ 120°	100-240VAC	0.95	2800-3300K/ 4000-4500K/ 5500-6000K	IP65	Lamp Body 45°: Φ420×255 90°: Φ500×190 120°: Φ515×140 Lamp Base 273×193×358





Integrated LED High Bay Light

Model No.	Power (W)	Lumen (LM)	Beam Angle	Input Voltage	PF	Color	IP Rating	Product Dimension (mm)
ENHB-100WBR-03MW	100	10000	25°/60°/90°	100-277VAC	0.95	3200K/ 3900K/ 4500K/ 5500K/ 6500K	IP65	Φ374×410
ENHB-120WBR-03MW	120	12000	25°/60°/90°	100-277VAC	0.95		IP65	Φ374×410
ENHB-150WBR-03MW	150	15000	25°/60°/90°	100-277VAC	0.95	3200K/ 3900K/ 4500K/ 5500K/ 6500K	IP65	Φ374×410
ENHB-200WBR-03MW	200	20000	25°/60°/90°	100-277VAC	0.95		IP65	Φ374×410
ENHB-300WBR-03MW	300	30000	25°/60°/90°	100-277VAC	0.95	3200K/ 3900K/ 4500K/ 5500K/ 6500K	IP65	Φ374×410
ENHB-400WBR-03MW	400	40000	25°/60°/90°	100-277VAC	0.95		IP65	Φ374×448
ENHB-500WBR-03MW	500	46000	25°/60°/90°	100-277VAC	0.95		IP65	Φ374×448

LED High Bay Bulb

Model No.	Power (W)	Lumen (LM)	Base	Beam Angle	Input Voltage	PF	Color	Product Dimension (mm)
ENHB-15WE27-03C	15	1275	E27	120°	85-265VAC	0.96	3000K/ 4500K/ 6000K	Φ100×148
ENHB-27WE27-03C	27	2295	E27	120°	85-265VAC	0.96	3000K/ 4500K/ 6000K	Φ130×193
ENHB-27WE40-03C	27	2295	E40	120°	85-265VAC	0.96	3000K/ 4500K/ 6000K	Φ130×206
ENHB-50WE40-03C	50	4000	E40	120°	85-265VAC	0.96	3000K/ 4500K/ 6000K	Φ173×248
ENHB-60WE40-03C	60	5100	E40	120°	85-265VAC	0.96	3000K/ 4500K/ 6000K	Φ204×277
ENHB-120WE40-03C	120	10200	E40	120°	85-265VAC	0.96	3000K/ 4500K/ 6000K	Φ250×355





EPISTAR



LED Corn Light

Model No.	Power (W)	Lumen (LM)	Base	Beam Angle	Input Voltage	PF	Color	Product Dimension (mm)
ENCL-15WE27-01	15	1500	E27	360°	85-300VAC	0.9	3000-3500K/ 4000-4500K/ 6000-6500K	Φ73×160
ENCL-15WE40-01	15	1500	E40	360°	85-300VAC	0.9	3000-3500K/ 4000-4500K/ 6000-6500K	Φ73×160
ENCL-20WE27-01	20	2000	E27	360°	85-300VAC	0.9	3000-3500K/ 4000-4500K/ 6000-6500K	Φ73×170
ENCL-20WE40-01	20	2000	E40	360°	85-300VAC	0.9	3000-3500K/ 4000-4500K/ 6000-6500K	Φ73×170
ENCL-30WE27-01	30	3250	E27	360°	85-300VAC	0.9	3000-3500K/ 4000-4500K/ 6000-6500K	Φ90×215
ENCL-30WE40-01	30	3250	E40	360°	85-300VAC	0.9	3000-3500K/ 4000-4500K/ 6000-6500K	Φ90×215
ENCL-40WE27-01	40	4100	E27	360°	85-300VAC	0.9	3000-3500K/ 4000-4500K/ 6000-6500K	Φ90×255
ENCL-40WE40-01	40	4100	E40	360°	85-300VAC	0.9	3000-3500K/ 4000-4500K/ 6000-6500K	Φ90×255
ENCL-60WE27-01	60	6000	E27	360°	85-300VAC	0.9	3000-3500K/ 4000-4500K/ 6000-6500K	Φ90×275
ENCL-60WE40-01	60	6000	E40	360°	85-300VAC	0.9	3000-3500K/ 4000-4500K/ 6000-6500K	Φ90×275
ENCL-80WE27-01	80	7900	E27	360°	85-300VAC	0.9	3000-3500K/ 4000-4500K/ 6000-6500K	Φ112×295
ENCL-80WE40-01	80	7900	E40	360°	85-300VAC	0.9	3000-3500K/ 4000-4500K/ 6000-6500K	Φ112×295
ENCL-100WE40-01	100	9800	E40	360°	85-300VAC	0.9	3000-3500K/ 4000-4500K/ 6000-6500K	Φ112×315
ENCL-120WE40-01	120	11000	E40	360°	85-300VAC	0.9	3000-3500K/ 4000-4500K/ 6000-6500K	Φ112×340

TUV Listed COB LED Street Light

Model No.	Power (W)	Lumen (LM)	Beam Angle	Input Voltage	PF	Color	IP Rating	Product Dimension (mm)
ENSL-30W-04	30	3000	130°/140°	90-305VAC	0.95	2700-3500K/ 3500-5500K/ 5500-6500K	IP65	650×236×117
ENSL-40W-04	40	4000	130°/140°	90-305VAC	0.95		IP65	650×236×117
ENSL-50W-04	50	5000	130°/140°	90-305VAC	0.95	2700-3500K/ 3500-5500K/ 5500-6500K	IP65	650×236×117
ENSL-60W-04	60	6000	130°/140°	90-305VAC	0.95		IP65	650×236×117
ENSL-80W-04	80	8000	130°/140°	90-305VAC	0.95	2700-3500K/ 3500-5500K/ 5500-6500K	IP65	800×291×132
ENSL-100W-04	100	10000	130°/140°	90-305VAC	0.95		IP65	800×291×132
ENSL-120W-04	120	12000	130°/140°	90-305VAC	0.95	2700-3500K/ 3500-5500K/ 5500-6500K	IP65	800×291×132
ENSL-150W-04	150	15000	130°/140°	90-305VAC	0.95		IP65	950×364×104
ENSL-180W-04	180	18000	130°/140°	90-305VAC	0.95		IP65	950×364×104



BRIDGELUX





BRIDGELUX



LED Flood Light

Model No.	Power (W)	Lumen (LM)	Beam Angle	Input Voltage	PF	Color	IP Rating	Product Dimension (mm)
ENFL-10W-01MW	10	1000	60°/120°	85-265VAC	0.95	2800-3300K/ 4000-4500K/ 5500-6000K	IP65	130×110×100
ENFL-20W-01MW	20	2000	60°/120°	85-265VAC	0.95	2800-3300K/ 4000-4500K/ 5500-6000K	IP65	210×185×140
ENFL-30W-01MW	30	3000	60°/120°	85-265VAC	0.95	2800-3300K/ 4000-4500K/ 5500-6000K	IP65	265×235×165
ENFL-50W-01MW	50	5000	60°/120°	85-265VAC	0.95	2800-3300K/ 4000-4500K/ 5500-6000K	IP65	325×265×185
ENFL-80W-01MW	80	8000	60°/120°	85-265VAC	0.95	2800-3300K/ 4000-4500K/ 5500-6000K	IP65	330×435×150
ENFL-100W-01MW	100	10000	60°/120°	85-265VAC	0.95	2800-3300K/ 4000-4500K/ 5500-6000K	IP65	395×470×185
ENFL-150W-01MW	150	15000	60°/120°	85-265VAC	0.95	2800-3300K/ 4000-4500K/ 5500-6000K	IP65	435×335×230

COB LED Tunnel Light

Model No.	Power (W)	Lumen (LM)	Beam Angle	Input Voltage	PF	Color	IP Rating	Product Dimension (mm)
ENTL-60W-01MW	60	6900	60°/120°	100-240VAC	0.95	2800-3300K/ 4000-4500K/ 5500-6000K	IP65	360×290×215
ENTL-80W-01MW	80	9200	60°/120°	100-240VAC	0.95		IP65	360×290×215
ENTL-100W-01MW	100	11500	60°/120°	100-240VAC	0.95	2800-3300K/ 4000-4500K/ 5500-6000K	IP65	360×290×215
ENTL-100W-02MW	100	11500	60°/120°	100-240VAC	0.95		IP65	600×290×215
ENTL-120W-02MW	120	13800	60°/120°	100-240VAC	0.95	2800-3300K/ 4000-4500K/ 5500-6000K	IP65	600×290×215
ENTL-140W-02MW	140	16100	60°/120°	100-240VAC	0.95		IP65	600×290×215
ENTL-120W-03MW	120	13800	60°/120°	100-240VAC	0.95	2800-3300K/ 4000-4500K/ 5500-6000K	IP65	925×290×220
ENTL-150W-03MW	150	17250	60°/120°	100-240VAC	0.95		IP65	925×290×220
ENTL-160W-04MW	160	18400	60°/120°	100-240VAC	0.95	2800-3300K/ 4000-4500K/ 5500-6000K	IP65	935×450×195
ENTL-200W-04MW	200	23000	60°/120°	100-240VAC	0.95		IP65	935×450×195



BRIDGELUX



TUV Listed LED Tunnel Light



BRIDGELUX

MW
MEAN WELL
LED DRIVER



Model No.	Input Voltage	Power (W)	Lumen (LM)	Beam Angle	CRI	Color	IP Rating	Product Dimension (mm)
ENTL-30W-03TUV	100-240VAC	30	3325	60°/120°	>75	3000-3500K/ 4000-4500K/ 5000-5500K/ 6000-6500K	IP65	395×190×190
ENTL-60W-03TUV	100-240VAC	60	6175	60°/120°	>75		IP65	395×275×190
ENTL-90W-03TUV	100-240VAC	90	9500	60°/120°	>75		IP65	395×360×190
ENTL-120W-03TUV	100-240VAC	120	12825	60°/120°	>75	3000-3500K/ 4000-4500K/ 5000-5500K/ 6000-6500K	IP65	445×395×190
ENTL-150W-03TUV	100-240VAC	150	15675	60°/120°	>75		IP65	530×395×190
ENTL-180W-03TUV	100-240VAC	180	19000	60°/120°	>75		IP65	615×395×190
ENTL-210W-03TUV	100-240VAC	210	21850	60°/120°	>75		IP65	700×395×190

LED Explosion Proof Flood Light

Model No.	Input Voltage	Power (W)	Lumen (LM)	Beam Angle	Color	IP Rating	Explosion-Proof Rating	Product Dimension (mm)
ENEP-20W-01	100-240VAC/ 12VDC/24VDC	20	1800	60°/90°/120°	3000-3500K/ 4000-4500K/ 6000-6500K	IP67	Ex dIICT6	Φ220×276
ENEP-30W-01	100-240VAC/ 12VDC/24VDC	30	2700	60°/90°/120°		IP67	Ex dIICT6	Φ220×276
ENEP-40W-01	100-240VAC/ 12VDC/24VDC	40	3600	60°/90°/120°		IP67	Ex dIICT6	Φ220×276
ENEP-50W-01	100-240VAC/ 24VDC/48VDC	50	4000	60°/90°/120°	3000-3500K/ 4000-4500K/ 6000-6500K	IP67	Ex dIICT6	Φ300×230
ENEP-60W-01	100-240VAC/ 12VDC/24VDC	60	4800	60°/90°/120°		IP67	Ex dIICT6	Φ300×230
ENEP-70W-01	100-240VAC/ 24VDC	70	5600	60°/90°/120°		IP67	Ex dIICT6	Φ300×230
ENEP-80W-01	100-240VAC/ 24VDC	80	6400	60°/90°/120°	3000-3500K/ 4000-4500K/ 6000-6500K	IP67	Ex dIICT6	Φ300×230
ENEP-90W-01	100-240VAC	90	7200	60°/90°/120°		IP67	Ex dIICT6	Φ300×230
ENEP-100W-01	100-240VAC	100	8000	60°/90°/120°		IP67	Ex dIICT6	Φ300×230
ENEP-110W-01	100-240VAC	110	8800	60°/90°/120°	3000-3500K/ 4000-4500K/ 6000-6500K	IP67	Ex dIICT6	Φ300×230
ENEP-120W-01	100-240VAC	120	9600	60°/90°/120°		IP67	Ex dIICT6	Φ300×230
ENEP-130W-01	100-240VAC	130	10400	60°/80°/100°		IP67	Ex dIICT6	Φ360×240
ENEP-140W-01	100-240VAC	140	11200	60°/80°/100°	3000-3500K/ 4000-4500K/ 6000-6500K	IP67	Ex dIICT6	Φ360×240
ENEP-150W-01	100-240VAC	150	13500	60°/80°/100°		IP67	Ex dIICT6	Φ360×240



BRIDGELUX

MW
MEAN WELL
LED DRIVER





BRIDGELUX



Portable LED Explosion Proof Flood Light

Model No.	Input Voltage	Power (W)	Lumen (LM)	Beam Angle	Color	IP Rating	Explosion-Proof Rating	Product Dimension (mm)
ENEP-20W-04	100-240VAC/12VDC/24VDC	20	1800	60°/90°/120°	3000-3500K/4000-4500K/6000-6500K	IP67	Ex dIICT6	267×240×516
ENEP-30W-04	100-240VAC/12VDC/24VDC	30	2700	60°/90°/120°	3000-3500K/4000-4500K/6000-6500K	IP67	Ex dIICT6	267×240×516
ENEP-40W-04	100-240VAC/12VDC/24VDC	40	3600	60°/90°/120°	3000-3500K/4000-4500K/6000-6500K	IP67	Ex dIICT6	267×240×516
ENEP-50W-04	100-240VAC/24VDC/48VDC	50	4000	60°/90°/120°	3000-3500K/4000-4500K/6000-6500K	IP67	Ex dIICT6	267×240×516
ENEP-60W-04	100-240VAC/12VDC/24VDC	60	4800	60°/90°/120°	3000-3500K/4000-4500K/6000-6500K	IP67	Ex dIICT6	267×240×516
ENEP-70W-04	100-240VAC/24VDC	70	5600	60°/90°/120°	3000-3500K/4000-4500K/6000-6500K	IP67	Ex dIICT6	267×240×516
ENEP-80W-04	100-240VAC/24VDC	80	6400	60°/90°/120°	3000-3500K/4000-4500K/6000-6500K	IP67	Ex dIICT6	267×240×516
ENEP-90W-04	100-240VAC	90	7200	60°/90°/120°	3000-3500K/4000-4500K/6000-6500K	IP67	Ex dIICT6	267×240×516
ENEP-100W-04	100-240VAC	100	8000	60°/90°/120°	3000-3500K/4000-4500K/6000-6500K	IP67	Ex dIICT6	267×240×516
ENEP-110W-04	100-240VAC	110	8800	60°/90°/120°	3000-3500K/4000-4500K/6000-6500K	IP67	Ex dIICT6	267×240×516
ENEP-120W-04	100-240VAC	120	9600	60°/90°/120°	3000-3500K/4000-4500K/6000-6500K	IP67	Ex dIICT6	267×240×516

LED Explosion Proof Street Light

Model No.	Input Voltage	Power (W)	Lumen (LM)	Beam Angle	Color	IP Rating	Explosion-Proof Rating	Product Dimension (mm)
ENEP-20W-05	100-240VAC/12VDC/24VDC	20	1800	60°/90°/120°	3000-3500K/4000-4500K/6000-6500K	IP67	Ex dIICT6	800×290×166
ENEP-30W-05		30	2700	60°/90°/120°	3000-3500K/4000-4500K/6000-6500K	IP67	Ex dIICT6	800×290×166
ENEP-40W-05		40	3600	60°/90°/120°	3000-3500K/4000-4500K/6000-6500K	IP67	Ex dIICT6	800×290×166
ENEP-50W-05		50	4000	60°/90°/120°	3000-3500K/4000-4500K/6000-6500K	IP67	Ex dIICT6	1020×380×230
ENEP-60W-05	100-240VAC/12VDC/24VDC	60	4800	60°/90°/120°	3000-3500K/4000-4500K/6000-6500K	IP67	Ex dIICT6	1020×380×230
ENEP-70W-05	100-240VAC/24VDC	70	5600	60°/90°/120°	3000-3500K/4000-4500K/6000-6500K	IP67	Ex dIICT6	1020×380×230
ENEP-80W-05		80	6400	60°/90°/120°	3000-3500K/4000-4500K/6000-6500K	IP67	Ex dIICT6	1020×380×230
ENEP-90W-05	100-240VAC	90	7200	60°/90°/120°	3000-3500K/4000-4500K/6000-6500K	IP67	Ex dIICT6	1020×380×230
ENEP-100W-05	100-240VAC	100	8000	60°/90°/120°	3000-3500K/4000-4500K/6000-6500K	IP67	Ex dIICT6	1020×380×230
ENEP-110W-05	100-240VAC	110	8800	60°/90°/120°	3000-3500K/4000-4500K/6000-6500K	IP67	Ex dIICT6	1020×380×230
ENEP-120W-05	100-240VAC	120	9600	60°/90°/120°	3000-3500K/4000-4500K/6000-6500K	IP67	Ex dIICT6	1020×380×230
ENEP-130W-05	100-240VAC	130	11700	60°/90°/120°	3000-3500K/4000-4500K/6000-6500K	IP67	Ex dIICT6	1020×380×230
ENEP-140W-05	100-240VAC	140	12600	60°/90°/120°	3000-3500K/4000-4500K/6000-6500K	IP67	Ex dIICT6	1020×380×230
ENEP-150W-05	100-240VAC	150	13500	60°/90°/120°	3000-3500K/4000-4500K/6000-6500K	IP67	Ex dIICT6	1020×380×230
ENEP-160W-05	100-240VAC	160	14400	60°/90°/120°	3000-3500K/4000-4500K/6000-6500K	IP67	Ex dIICT6	1020×380×230
ENEP-170W-05	100-240VAC	170	15300	60°/90°/120°	3000-3500K/4000-4500K/6000-6500K	IP67	Ex dIICT6	1020×380×230
ENEP-180W-05	100-240VAC	180	16200	60°/90°/120°	3000-3500K/4000-4500K/6000-6500K	IP67	Ex dIICT6	1020×380×230
ENEP-190W-05	100-240VAC	190	17100	60°/90°/120°	3000-3500K/4000-4500K/6000-6500K	IP67	Ex dIICT6	1020×380×230
ENEP-200W-05	100-240VAC	200	18000	60°/90°/120°	3000-3500K/4000-4500K/6000-6500K	IP67	Ex dIICT6	1020×380×230



BRIDGELUX



Eneltec Group

Headquarters

Eneltec (Israel) Ltd.

Add: 2 Habonim St', P.O.Box 8765, Netanya 42504, Israel

Tel: 972-9-8855167

Fax: 972-9-8650271

Global Marketing Center

Eneltec (Shanghai) Co., Ltd.

Add: Rm 1629, No.289, Wujin Rd, Shanghai, China, 200080

Tel: 86-21-33811921 , 33811922

Fax: 86-21-33811923

Website: www.eneltec-led.com

E-mail:

General Information: info@eneltec-led.com

Sales Department: sales@eneltec-led.com

Service Department: service@eneltec-led.com